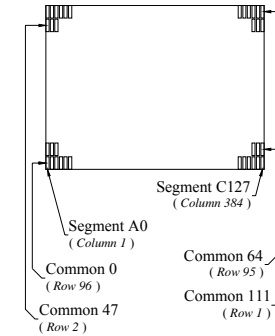
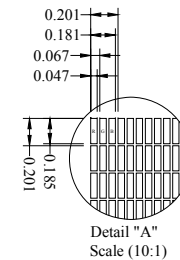


(Reference Mechanical Design)



Pin	Symbol
1	N.C. (GND)
2	VCC
3	VCOMH
4	VDDIO
5	VSL
6	N.C.
7	D7
8	D6
9	D5
10	D4
11	D3
12	D2
13	D1
14	D0
15	E/RD#
16	R/W#
17	BS0
18	BS1
19	CS#
20	D/C#
21	RES#
22	IREF
23	GPIO1
24	GPIO0
25	N.C.
26	VDD
27	VCL
28	VSS
29	N.C.
30	N.C. (GND)



Notes:

1. Driver IC: SSD1351
2. Die Size: 10700um x 1500um
3. Interface:  
8-bits 68XX/80XX Parallel, 3-/4-wire SPI
4. General Tolerance: ±0.30
5. The total thickness (1.70 Max) is without polarizer protective film & remove tape.  
The actual assembled total thickness with above materials should be 1.95 Max.

CUSTOMER APVL	CUSTOMER	DATE	TITLE
DRAWN	SCALE	UNIT	MI12896BO
DFTG CHK	UNIT	mm	MODEL
ENGR CHK	APPROVAL		
MULTI-INNO TECHNOLOGY CO.,LTD.			DWG NO
			PAGE 1/1