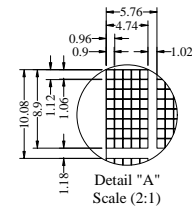


(Reference Mechanical Design)



Pin	Symbol
1	N.C.
2	VSL
3	VSS
4	REGVDD
5	SHLC
6	SHLS
7	VDD
8	VDDIO
9	BS0
10	BS1
11	BS2
12	GPIO
13	CS#
14	RES#
15	D.C#
16	RWR(WR#)
17	ERRDY
18	D0
19	D1
20	D2
21	D3
22	D4
23	D5
24	D6
25	D7
26	REF
27	ROM0
28	ROM1
29	OPR0
30	OPR1
31	VCOMH
32	VCC
33	N.C.

Notes:

1. Color: Yellow
2. Driver IC: US2066
3. Interface:
4-/8-bit 68XX/80XX Parallel, SPI, I2C
4. General Tolerance: ±0.30
5. The total thickness (2.10 Max) is without polarizer protective film & remove tape.
The actual assembled total thickness with above materials should be 2.35 Max.

CUSTOMER APVL		DATE	
DRAWN	SCALE	TITLE	
DFTG CHK	UNIT	MI1602EO-Y	
ENGR CHK	mm	MODEL	
APPROVAL		DWG NO	PAGE
MULTI-INNO TECHNOLOGY CO.,LTD.			1/1