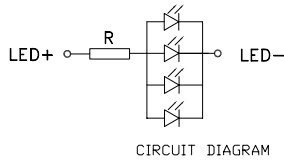
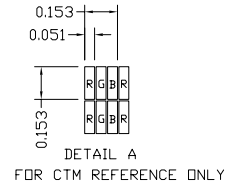
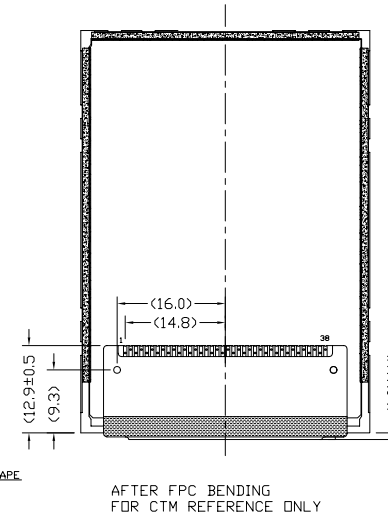
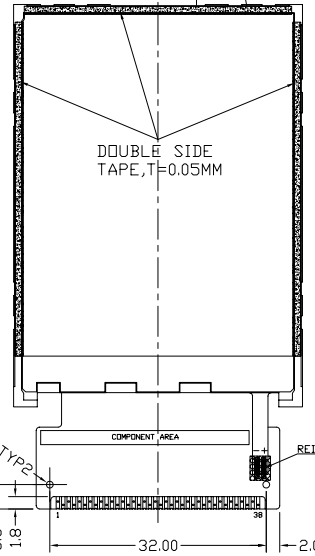


3.0 MAX
(INCLUDE DST)



IM2	IM1	IM0	Interface Mode	I/O
0	0	0	80 MCU 16-bit bus	DB[17:10], DB[8:1]
0	0	1	80 MCU 8-bit bus	DB[17:10]
0	1	0	80 MCU 18-bit bus	DB[17:0]
0	1	1	80 MCU 9-bit bus	DB[17:9]
1	0	1	3-wire 9-bit data serial interface	SDI(SDO)(DC)(SCL)
1	1	0	4-wire 8-bit data serial interface	SDI(SDO)(DC)(SCL)(WRX)(DCX)

PIN ASSIGNMENT:

1	2	3	4	5	6	7	8	9	10	-----	27
X+	Y+	X-	Y-	IM0	IM1	IM2	RESET	VSS	DB17	-----	DB0
28	29	30	31	32	33	34	35	36	37	38	
SDO	SDI	RD	WRX(D/CX)	D/CX(SCL)	CSX	TE	VCC	VSS	LED-	LED+	

DISPLAY TYPE	TFT, TRANSMISSIVE 262K COLOR	
DISPLAY RESOLUTION	240XRGBX320	
VIEWING ANGLE	12 O' CLOCK	
LCD CONTROLLER /DRIVER	ILI9341	
LOGIC VOLTAGE	~2.8V(TYP)	
OPERATING TEMPERATURE	-20° C to +70° C	
STORAGE TEMPERATURE	-30° C to +80° C	
BACKLIGHT	TYPE	LED 4PCS
	COLOR	White
	WAVELENGTH	--
	DRIVING VOLTAGE	~3.2V @60mA
	LUMINANCE(cd/m2) (ON THE BACKLIGHT SURFACE)	Min. -- Max. --

CUSTOMER APVL	CUSTOMER	DATE	TITLE
			MI0240A2T-1
DRAWN	SCALE	UNIT	MODEL
DFTG CHK		mm	
ENGR CHK			
APPROVAL			
MULTI-INNO TECHNOLOGY CO.,LTD.			DWG NO
			PAGE
			1/1