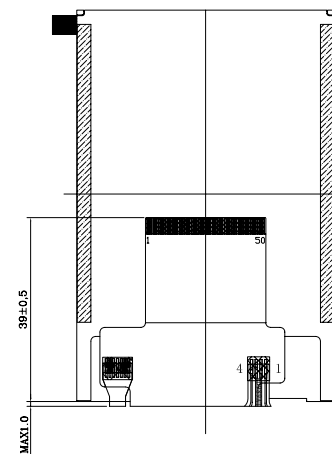
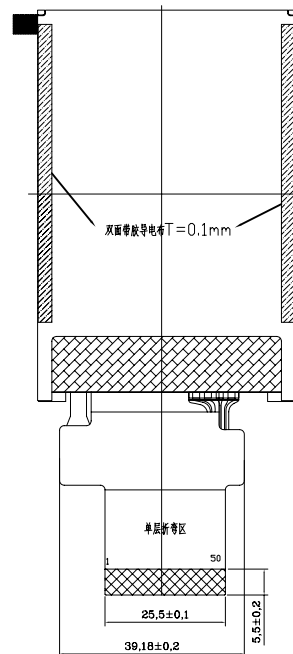
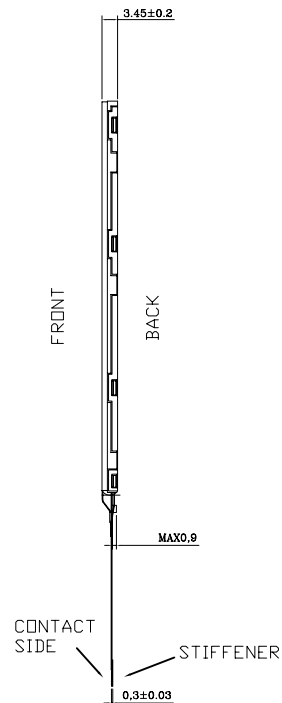
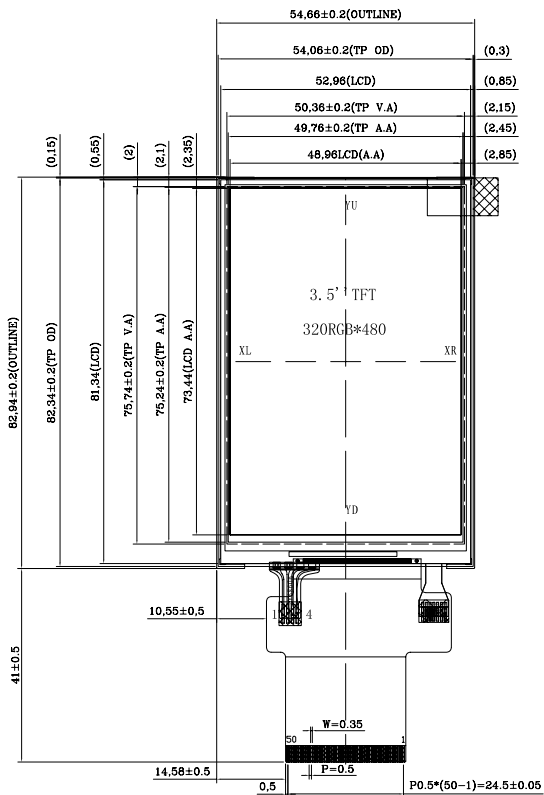


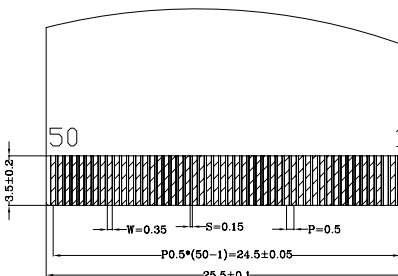
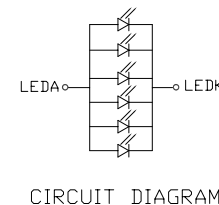


1	LEDK
2	LEDA
3	LEDA
4	LEDA
5	LEDA
6	IM0
7	IM1
8	IM2
9	NC
10	RESET
11	VSYNC
12	HSYNC
13	DOTCLK
14	DE
15	DB17
16	DB16
17	DB15
18	DB14
19	DB13
20	DB12
21	DB11
22	DB10
23	DB9
24	DB8
25	DB7
26	DB6
27	DB5
28	DB4
29	DB3
30	DB2
31	DB1
32	DB0
33	SDD
34	SDI
35	RD
36	WRX/SCL
37	D/CX
38	CSX
39	TE
40	VDDI
41	VDDI
42	VCI
43	GND
44	X+(XR)
45	Y+(YD)
46	X-(XL)
47	Y-(YU)
48	GND
49	GND
50	GND



NOTES:

1. DISPLAY TYPE: TFT, TRANSMISSIVE, NORMAL WHITE
2. DRIVING VOLTAGE: VDDI/VCI=2.8V
3. VIEWING DIRECTION: 6 O'CLOCK.
4. IC DRIVER: ILI9488
5. OPERATING TEMP: -20°C ~ 70°C.
6. STORAGE TEMP: -30°C ~ 80°C.
7. INTERFACE: 8/9/16/18-BIT 8080 or RGB or SPI.
8. LED BACKLIGHT: 6-LED WHITE
9. SURFACE LUMINANCE: 290cd/m².
10. GENERAL TOLERANCE: ±0.2.
11. RECOMMENDED CASE OPEN AREA SHOULD BE LESS THAN MODULE V.A.
12. RECOMMENDED CUSHION ADHERENT AREA: TP V.A+1.6mm.
13. RoHS COMPLIANT.



CUSTOMER APVL		DATE	2013/11/25
DRAWN		SCALE	TITLE
DFTG CHK		UNIT	MI0350EAT-6
ENGR CHK			MODEL
APPROVAL			
MULTI-INNO TECHNOLOGY CO.,LTD.		DWG NO	PAGE
			1/1