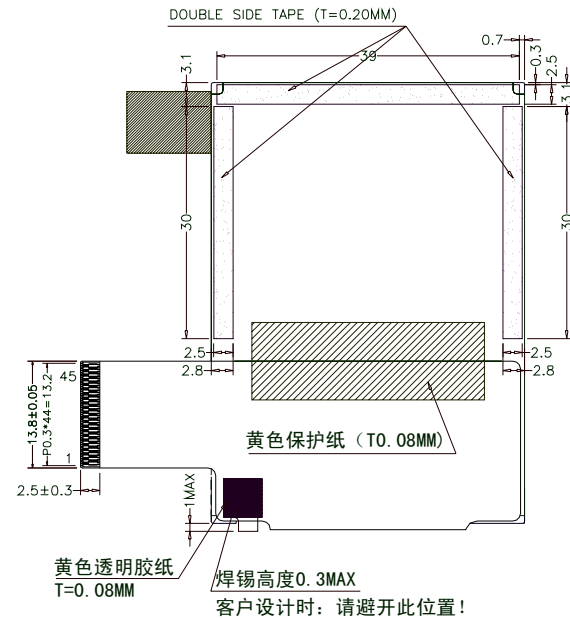


FPC弯折出货

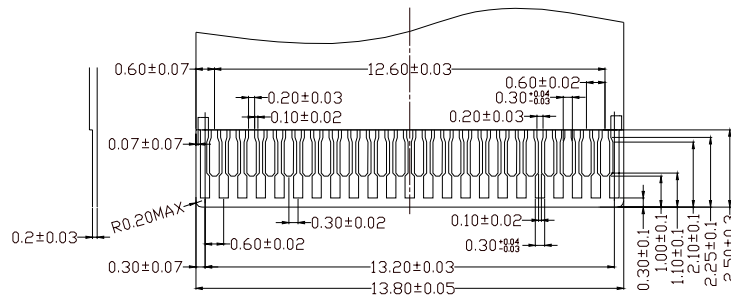
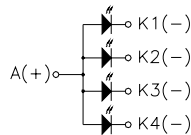
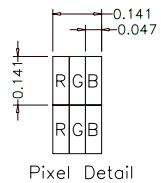


环保标准

ROHS标准
 《 有害物质管理标准》

FPC PIN ASSIGNMENT

1	GND	24	SDI/SDO
2	LEDK4	25	D17
3	LEDK3	26	D16
4	LEDK2	27	D15
5	LEDK1	28	D14
6	LEDA	29	D13
7	GND	30	D12
8	CABC	31	D11
9	VCI	32	D10
10	VCI	33	D9
11	RS	34	D8
12	CS	35	D7
13	VSYNC	36	D6
14	HSYNC	37	D5
15	CLK	38	D4
16	DEN	39	D3
17	RESET	40	D2
18	RD	41	D1
19	WR	42	DO
20	IM3	43	TE
21	IM2	44	IOVCC
22	IM1	45	GND
23	IMO		



NOTES:

1. LCD DISPLAY MODE: TFT, TRANSLUCTIVE(TF-E1)
2. DRIVE IC :HX8347-1000PD250
3. OPERATING TEMPERATURE: -20°C TO 70°C
4. STORAGE TEMPERATURE: -30°C TO 80°C
5. RECOMMEND CONNECTOR: FH26-45S-0.3SHW(HIROSE)
6. GENERAL TOLERANCE ±0.3

CUSTOMER APVL		DATE	
DRAWN	SCALE	TITLE	
DFTG CHK	UNIT	MI0220ZT-1	
ENGR CHK	mm	MODEL	
APPROVAL			
MULTI-INNO TECHNOLOGY CO.,LTD.		DWG NO	PAGE
			1/1