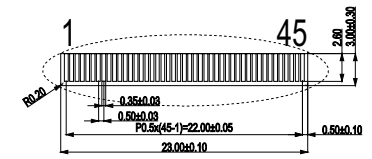
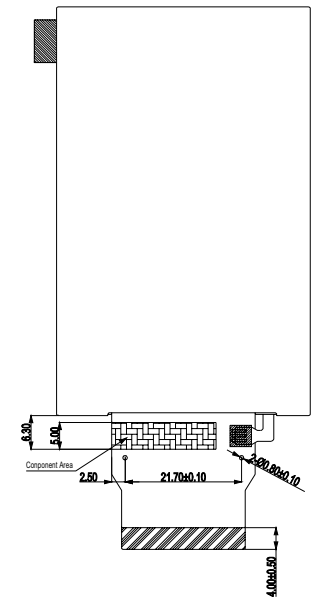
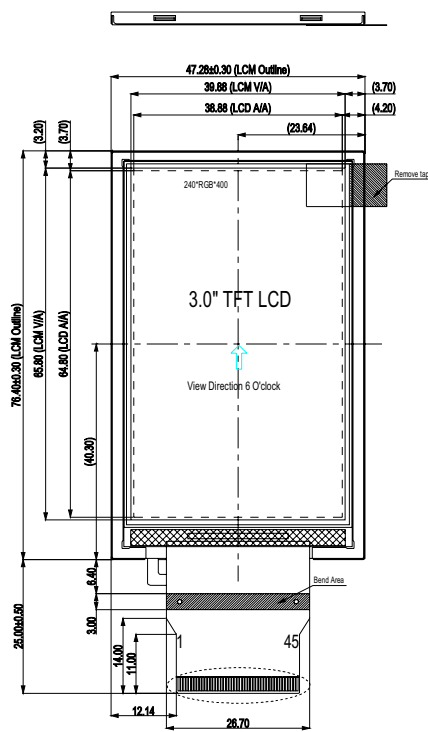
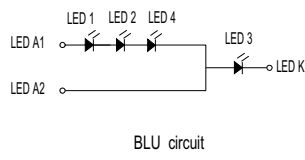


NO.	Symbol	
	CPU	RGB
1	GND	GND
2	LED-K	LED-K
3	LED-A2	LED-A2
4	LED-A1	LED-A1
5	GND	GND
6	GND	GND
7	/RESET	/RESET
8	GND	GND
9	DB17	R5
10	DB16	R4
11	DB15	R3
12	DB14	R2
13	DB13	R1
14	DB12	R0
15	DB11	G5
16	DB10	G4
17	DB9	G3
18	DB8	G2
19	DB7	G1
20	DB6	G0
21	DB5	B5
22	DB4	B4
23	DB3	B3
24	DB2	B2
25	DB1	B1
26	DB0	B0
27	GND	SDI
28	Open	SDO
29	/RD	NC
30	/WR	SCL
31	RS	NC
32	/CS	CS
33	GND	ENABLE
34	GND	VSYNC
35	GND	HSYNC
36	GND	DOTCLK
37	TE	TE
38	VCCIO	VCCIO
39	VCC	VCC
40	IM0/ID	IM0/ID
41	IM1	IM1
42	IM2	IM2
43	GND	GND
44	GND	GND
45	GND	GND



DETAIL: B  
SCALE: 2:1

- NOTES**
1. Display Type: TFT
  2. Backlight: 4-chips LED
  3. Driver IC: HX8352B
  4. General Tolerance: ±0.2
  5. Requirements on Environment Protection: RoHS Compliant
  6. Main FPC Connector size: FH19 SC-45S-0.5SH (05) (HRS)
  7. Recommended Case Open Area should be less than LCM V/A



CUSTOMER APVL	CUSTOMER	DATE		
DRAWN	DFTG CHK	ENGR CHK	SCALE	TITLE
APPROVAL			UNIT	MODEL
			mm	MIO300GT-1
			APPROVAL	MODEL
MULTI-INNO TECHNOLOGY CO.,LTD.			DWG NO	PAGE
				1/1